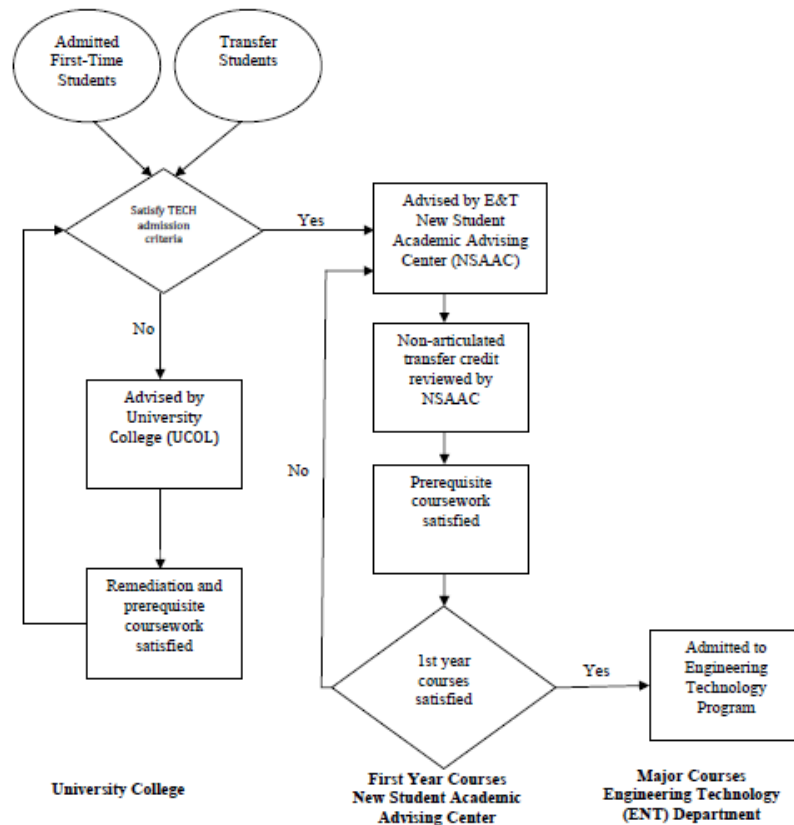


Admissions Process

Students have two pathways to enter IUPUI and the School of Engineering and Technology and are advised in different ways based on their admission status (First-Time and Transfer), their previous college course work (if any), and their progression through the program. The following figure outlines that process and provides an outline of the admission and advising process. This process is the same for all programs in the Department of Engineering and Technology, including Construction Management.



Admission Process for the Degree Program

Admissions Requirements for Direct Admissions to Technology Programs: students admitted to IUPUI must meet the following criteria for direct admission to the CEMT Program in the School of Engineering and Technology using the following criteria:

- Academic Honors Diploma
- or Core 40 or equivalent coursework* with a GPA of 3.0
- or Core 40 or equivalent coursework* with these scores:
- SAT: Math score of 500 and Verbal /Critical Reading score of 450
- OR
- ACT: Math score of 21 and English score of 19 (Completion of the writing section is required on both exams.)

*8 semesters of mathematics including pre-calculus, 6 semesters of science, with labs, including a year of chemistry. 6 semesters of social science, 4 semesters of additional college prep courses selected from mathematics, English, science, foreign language, and social sciences.

Admission Process for New Students

Entering freshmen new to IUPUI and with less than 18 transfer credit hours are expected to attend an orientation program provided by IUPUI's Orientation Services Office. First-year students have the option of attending a two-day orientation experience instead of the previous one-day format. These students are able to schedule an orientation program from a selection of dates beginning in April and continuing until early August. Special orientation sessions are reserved for scholarship students. At the time students schedule their orientation day, they also schedule a time and date to take math, chemistry, and other placement tests. Placement tests are taken before the orientation day, allowing the results to be available to the advisors before a student registers for classes. All necessary authorizations that a student might require are handled by the New Student Academic Advising Center (NSAAC) before the student arrives for orientation.

The orientation day consists of several activities to introduce students to college and to help them feel comfortable in their new environment. Students do register for classes during their orientation day. The day is generally organized as follows:

1. Students are introduced to college in general and the IUPUI campus, in particular.
2. Students are assigned IDs.
3. Students are introduced to the School of Engineering and Technology by the Dean or Associate Dean for Academic Affairs and Undergraduate Programs.
4. Students are introduced to the individual technology programs by the Director of the NSAAC and provided with general information regarding their first year of studies.
5. Students meet individually with a NSAAC advisor to plan their class schedule.

Orientation day is completed when students have registered. Typically, full-time freshman students are served by the New Student Academic Advising Center (NSAAC) for two semesters as they complete the freshman curriculum requirements. When they have fulfilled the freshman curriculum, students are moved to their chosen engineering technology program (i.e., CEMT). Each of these programs has a specific code assigned by the Registrar so the students are readily identifiable.

All NSAAC advisors are knowledgeable about the extensive resources available within the University that are designed to assist and support students. Students are informed at orientation to contact their advisor for guidance on any issues that may affect their academic success. The learning community course, TECH 10200, continues to reinforce new students' awareness of the array of campus services. Some of the more widely utilized campus services include the Math Assistance Center (MAC), the Technical Communication Writing Center, Counseling and Psychological Services (CAPS), University Information Technology Services (UITS), and the Career Center.

Admission Process for Transfer Students

The School of Engineering and Technology welcomes students who are transferring with credit hours from another institution. College transcripts are reviewed by the IUPUI Admissions office to determine the courses that will transfer. As with first-time students, transfer students from another university are admitted through the Admissions Office. These students are instructed to attend a transfer student orientation during which they will meet with an advisor from the New Student Academic Advising Center (NSAAC) and register for classes. They may also contact the NSAAC directly for assistance with transfer credit evaluation and for help with registration. Several advisors from the NSAAC are trained to work with engineering technology transfer students. Students' course schedules are determined based upon applicable transfer credit and current degree requirements. Advising by the NSAAC staff continues until the transfer credit evaluation is completed and freshman course requirements have been satisfied. The student is then released from the freshman

code and assigned the code for the proper Engineering Technology major. The student is moved from the NSAAC to the specified program in the Engineering Technology Department and the program advisor now becomes the advisor for that student.

Admission Requirements for University College (UCOL)

Students not admitted directly to a technology program in the School of Engineering and Technology but who are eligible for admission to IUPUI are admitted to University College while they work toward their goals to meet the requirements of their program of interest within the School of Engineering and Technology.

Process for Students Admitted to University College (UCOL)

Students interested in majoring in Engineering Technology but who do not meet the criteria to be directly admitted to the School of Engineering and Technology are admitted to University College (UCOL). These students are advised by advisors in UCOL. A liaison between University College and the New Student Academic Advising Center (NSAAC) spends half of the time in the NSAAC and the remainder at University College. In UCOL, advisors keep abreast of curricular requirements for engineering and technology programs. UCOL students can enroll in English composition, public speaking, and other humanities and social science courses that are required in the engineering technology plans of study while taking the prerequisite courses needed to be admitted into the School. UCOL students interested in Engineering Technology can take TECH 10200, the engineering technology learning community. If qualified, students may also take other introductory engineering technology (i.e., CEMT) courses. Students from UCOL are eligible to transfer into the School of Engineering and Technology when they have an overall GPA of 2.0 and are ready to begin MATH 15300 (pre-calculus) and have completed ENG-W 131.