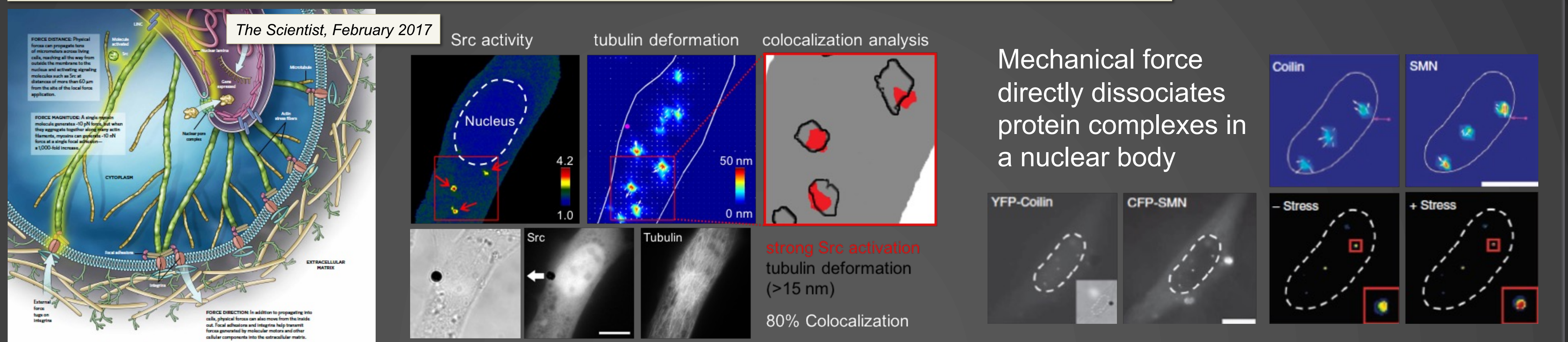
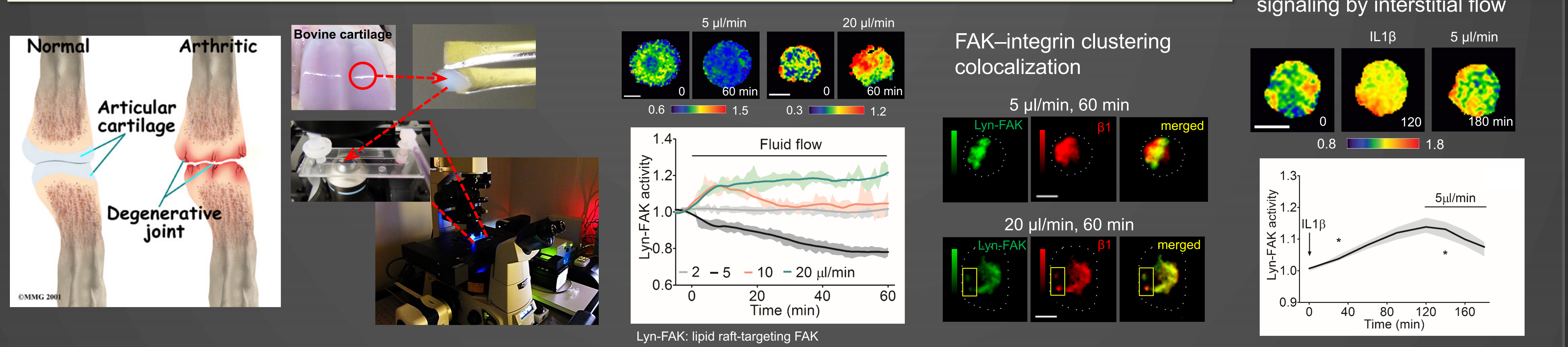


The primary objective of our research group is to understand the biophysical mechanism by which cells sense and respond to specific physical stimuli in the environment, including dimensionality and rigidity of the extracellular matrix as well as mechanical forces. It is becoming increasingly recognized that the fundamental question of how cells function cannot be solved by focusing exclusively on individual genes and proteins; it also depends on mechanical cues, local microenvironment, and system level integration, which has collectively led to the fascinating new field: Mechanotransduction.

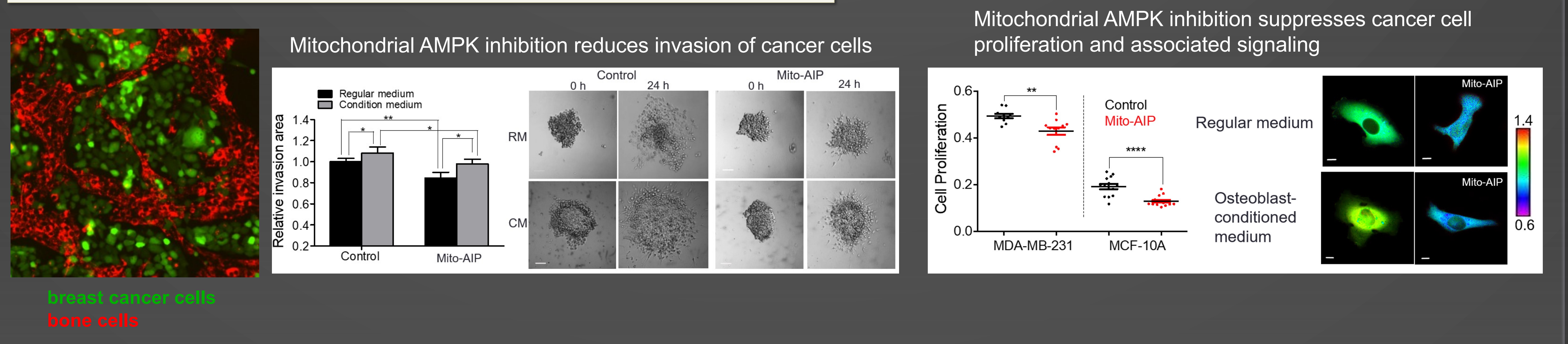
How cells respond to their physical environments?



How to block inflammatory signaling in osteoarthritis?



How to block cancer progression?



Interested in research opportunities?

Dr. Sungsoo Na
Office: SL 220H
Labs: EL221 & EL227
Phone: (317) 278 - 2384
Email: sungna@iu.edu